

# VIRA®

## Fiammac

# 2024 Product List



## SMH 1000

# Self Monitoring Level Alarm Control System

### Self Monitoring Level Alarm Controller

Type	: SMK 1000
Enclosure	: Panel Type
Supply Voltage	: 230 VAC (+5% / -10%) 50/60Hz
Function	: Self Monitoring High- Low Level Alarm
Output	: Two Alarm Relay, RS 485 Modbus Output
Max. Ambient Temp.	: 55°C



### Self Monitoring High Level Alarm Probe

Type	: SMHD 1000
Nominal Pressure	: PN 40
Max. Operat. Temp.	: 239 °C
Max. Operat. Press.	: 32 Bar g
Connection	: 1/2" BSP Threaded
Length	: 500, 1000, 1500 mm
Max. Ambient Temp	: 70 °C

PRICE	500 mm	€	1000 mm	€	1500 mm	€
-------	--------	---	---------	---	---------	---

# SML 1000

## Self Monitoring Low Level Alarm System

### Self Monitoring Level Alarm Controller

- Type : SMK 1000
- Enclosure : Panel Type
- Supply Voltage : 230 VAC (+5% / -10%) 50/60Hz
- Function : Self Monitoring High- Low Level Alarm
- Output : Two Alarm Relay, RS 485 Modbus Output
- Max. Ambient Temp. : 55°C

PRICE €



### Self Monitoring Low Level Alarm Probe

- Type : SMLD 1000
- Nominal Pressure : PN 40
- Max. Operat. Temp. : 239 °C
- Max. Operat. Press. : 32 Bar g
- Connection : 1/2" BSP Threaded
- Length : 500, 1000, 1500 mm  
(can be cut to desired level)
- Max. Ambient Temp : 70 °C

PRICE 500 mm € 1000 mm € 1500 mm €



**SK 1000**

**Level Alarm System**

**Level Alarm Controller**

- Type : SK 1200
- Supply Voltage : 230 VAC (+5% / -10%), 50/60Hz
- Function : High Alarm, Low Alarm
- Output : Two Alarm Relay
- Max. Ambient Temp. : 55 °C

PRICE €



**Level Alarm Probe**

- Type : SD 1200
- Nominal Pressure : PN 40
- Max. Operat. Temp. : 239 °C
- Max. Operat. Press : 32 Bar g
- Connection : 1" BSP Threaded
- Length : 500, 1000, 1500 mm  
(can be cut to desired level)
- Max. Ambient Temp : 70 °C

PRICE 500 mm € 1000 mm € 1500 mm €



## SK 2000

## On-Off Level Control and Alarm System

### On-Off Level and Alarm Controller

Type	: SK 2400
Supply Voltage	: 230 VAC (+5% / -10%), 50/60Hz
Enclosure	: Panel Type
Function	: Pump On-Off, High Alarm, Low Alarm
Output	: One Pump On-Off Relay, Two Alarm Relay
Max. Ambient Temp.	: 55 °C

PRICE €



### On-Off Level and Alarm Probe

Type	: SD 2400
Nominal Pressure	: PN 40
Max. Operat. Temp.	: 239 °C
Max. Operat. Press.	: 32 Bar g
Connection	: 1" BSP Threaded
Length	: 500, 1000, 1500 mm
(can be cut to desired level)	
Max. Ambient Temp	: 70 °C

PRICE 500 mm € 1000 mm € 1500 mm €



# SK-T 2400

## Compact On-Off Level Control and Alarm System

### Compact On-Off Level Control and Alarm System

Type	: SK-T 2400
Supply Voltage	: 230 VAC (+5% / -10%), 50/60Hz
Function	: Pump On-Off, High Alarm, Low Alarm
Output	: One Pump On-Off Relay, Two Alarm Relay
Nominal Pressure	: PN 40
Max. Operat. Temp.	: 239 °C
Max. Operat. Press.	: 32 Bar g
Connection	: 1" BSP Threaded
Length	: 500, 1000, 1500 mm
(can be cut to desired level)	
Max. Ambient Temp	: 70 °C



PRICE	500 mm	€	1000 mm	€	1500 mm	€
-------	--------	---	---------	---	---------	---

# SK 3000

## Modulating Level Control and Alarm System

### Modulating Level Controller

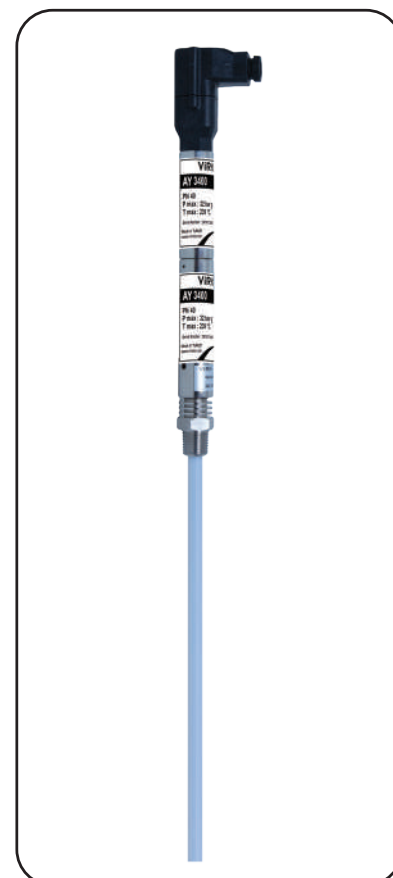
Type	: SK 3400
Supply Voltage	: 230 VAC (+5% / -10%), 50/60Hz
Enclosure	: Panel Type
Function	: Modulating Level Control, High Alarm, Low Alarm
Output	: 4-20 mA Output, Valve Control Relay, Two Alarm Relay
Max. Ambient Temp.	: 55 °C



PRICE €

### Modulating Level Control Probe (Capacitive Level Probe)

Type	: SD 3400
Nominal Pressure	: PN 40
Max. Operat. Temp.	: 239 °C
Max. Operat. Press.	: 32 Bar g
Connection	: 1/2" BSP Threaded
Length	: 300-1500 mm
(must be specified in order phase)	
Max. Ambient Temp	: 70 °C



PRICE 500 mm € 1000 mm € 1500 mm €

## SKV 3400

## Modulating Level Control Valves

### 2-Way Modulating Level Control Valve

Type	: SKV 3400-2
Enclosure	: IP 65
Sizes	: DN 15 - DN 300
Max. Operat. Temp	: 220 -250 °C
Supply Voltage	: 230 VAC (+5% / -10%) 50/60Hz
Max. Ambient Temp.	: 60 °C
Control Mode	: Float Contact
Pressure Class	: PN 16-25-40, ANSI 150 and ANSI 300



### 3-Way Modulating Level Control Valve

Type	: SKV 3400-3
Enclosure	: IP 65
Sizes	: DN 15 - DN 300
Max. Operat. Temp	: 220 -250 °C
Supply Voltage	: 230 VAC (+5% / -10%) 50/60Hz
Max. Ambient Temp.	: 60 °C
Control Mode	: Float Contact
Pressure Class	: PN 16-25-40, ANSI 150 and ANSI 300



\* Modulating feed water control valves are selected for each system according to the system specifications. Please ask for a quote by sharing process information with our sales team.



## SD-AY 420A

# SD-AY 420A Capacitive Level Transmitter

### SD-AY 420A Capacitive Level Transmitter

Type	: SD-AY 420A
Supply Voltage	: 230 VAC (+5% / -10%) 50/60Hz, 24 VDC (Optional)
Output	: 4-20 mA Output
Nominal Pressure	: PN 40
Max. Operat. Temp.	: 239 °C
Max. Operat. Press.	: 32 Bar g
Connection	: 1/2" BSP Threaded
Length	: 300 -1500 mm (must be specified in order phase)
Max. Ambient Temp	: 70 °C



PRICE	500 mm	€	1000 mm	€	1500 mm	€
-------	--------	---	---------	---	---------	---

## DB2

# Automatic Bottom Blowdown System

### Bottom Blowdown Controller

Type	: BK 4000
Supply Voltage	: 230 VAC (+5% / -10%) 50/60Hz
Enclosure	: Panel Type
Function	: Valve on-Off, Valve On-Off Failure Alarm
Output	: Control Relay, Alarm Relay
Features	: Intercontroller communication, Blowdown Remaining Time, Blowdown



PRICE

€

### Bottom Blowdown Valve

Type	: BKV 4000
Nominal Pressure	: PN 25 - PN 40
Max. Operat. Temp.	: 205 °C
Max. Operat. Press.	: 16 Bar g
Size	: DN 25 - DN 80
Body	: GGG 40, Monoblock

\* Please ask for different sizes and pressure class.

SIZE	PRICE
DN 40	€
DN 50	€

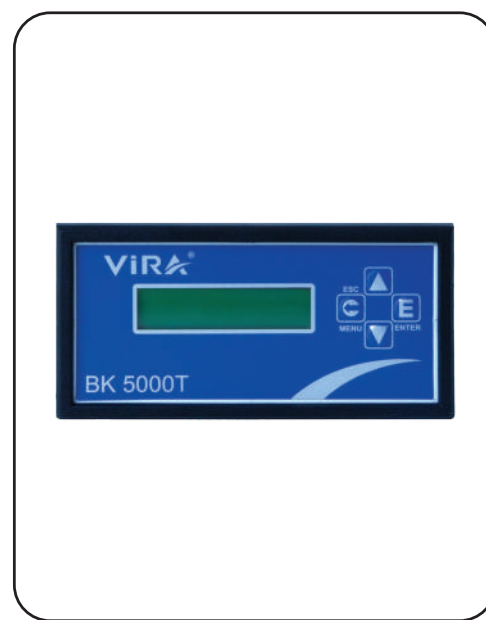


## BS4-T

# Temperature Compensation Type Automatic TDS Blowdown System

### Temp. Comp. Type Conductivity Controller

Type	: BK 5000-T
Supply Voltage	: 230 VAC (+5% / -10%) 50/60Hz
Enclosure	: Panel Type
Functions	: Continuous Blowdown Valve Control, High TDS Alarm
Output	: 4-20 mA Output, High TDS Alarm Relay, Valve Relay, RS 485 Modbus Output
Features	: Conductivity Set Value, Alarm Set Value, Valve Relay Test, Alarm Relay Test, Temp. Compensation



PRICE

€

### Temperature Compensation Type Conductivity Probe

Type	: BD 5600-T
Nominal Pressure	: PN 40
Max. Operat. Temp.	: 239 °C
Max. Operat. Press.	: 32 Bar g
Connection	: 1/2" BSP Threaded
Length	: 500 mm
Max. Ambient Temp.	: 70 °C

\* Please ask for different length.

PRICE

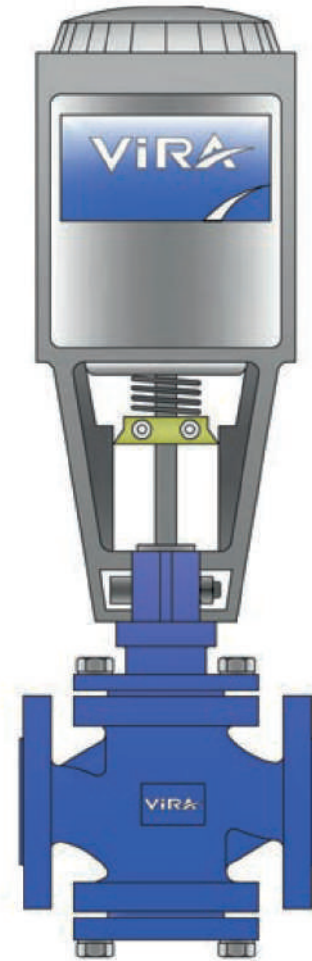
€



### Continuous (TDS ) Blowdown Valve

Type : BKV 5400  
 Nominal Pressure : PN 40  
 Max. Operat. Temp. : 239 °C  
 Max. Operat. Press. : 32 Bar g  
 Size : DN 20  
 Body : GGG 40 Nodular Cast Iron  
 Sample Cooler Outlet : 1/4" BSP Threaded

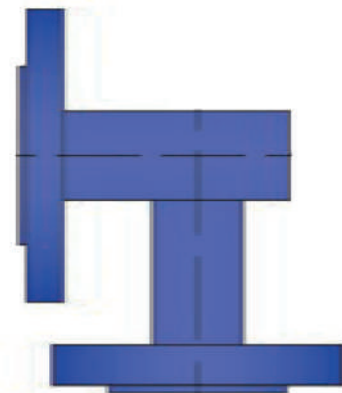
SIZE	PRICE
DN 20	€
DN 40	€



### Conductivity Probe Body

Type : DG 5400  
 Nominal Pressure : PN 40  
 Max. Operat. Temp. : 239 °C  
 Max. Operat. Press. : 32 Bar g  
 Size : DN 20 - 1/2"  
 Body : Carbon Steel

PRICE	€
-------	---



# BS4

## Automatic TDS Blowdown System

### Conductivity Controller

Type	: BK 5000-T
Supply Voltage	: 230 VAC (+5% / -10%) 50/60Hz
Enclosure	: Panel Type
Functions	: Continuous Blowdown Valve Control, High TDS Alarm
Output	: 4-20 mA Output, High TDS Alarm Relay, Valve Relay, RS 485 Modbus Output
Features	: Conductivity Set Value, Alarm Set Value, Valve Relay Test, Alarm Relay Test



PRICE

€

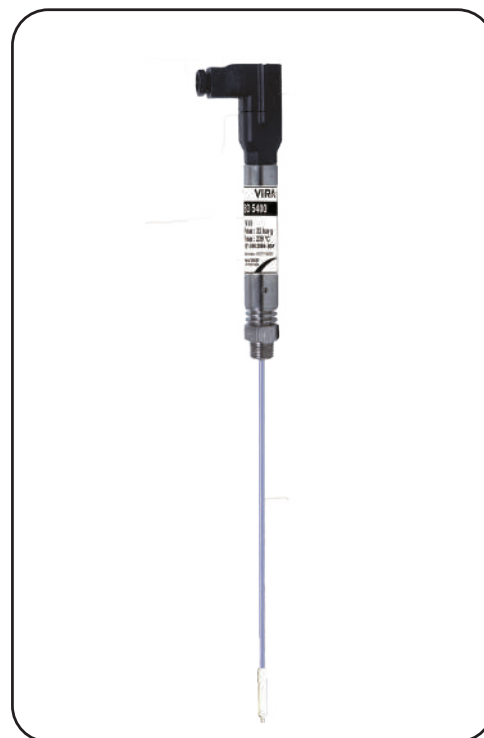
### Conductivity Probe

Type	: BD 5400
Nominal Pressure	: PN 40
Max. Operat. Temp.	: 239 °C
Max. Operat. Press.	: 32 Bar g
Connection	: 1/2" BSP Threaded
Length	: 500 mm
Max. Ambient Temp.	: 70 °C

\* Please ask for different length.

PRICE

€



## NK 20

## Sample Cooler

### Sample Cooler

Type	: NK 20
Body	: AISI 304 Stainless Steel
Pipe Coil	: AISI 304 Stainless Steel
Pipe Coil Nominal Pressure	: PN 40
Max. Operat. Press.	: 32 Bar g
Max. Operat. Temp.	: 239 °C
Cooling Water Connection	: 1/2" BSP Threaded
Sample Connection	: 1/4" BSP Threaded

PRICE

€

### Sample Cooler Assembly Tool

Type	: NK 20 - MS
Needle Valve	: 1/4"
Street Elbow	: 1/4"
Pipe	: 1/4" , 50 cm, Ø6mm
Reduction	: 1/2" - 1/4"
Connector	: 1/4", Ø6mm
Valve	: 1/2" Male - Female

PRICE

€



# BS3-T

## Condensate Contamination Control System

### Conductivity Controller

Type	: BK 5000-T
Supply Voltage	: 230 VAC (+5% / -10%) 50/60Hz
Enclosure	: Panel Type
Functions	: Continuous Blowdown Valve Control, High TDS Alarm
Output	: 4-20 mA Output, High TDS Alarm Relay, Valve Relay, RS 485 Modbus Output
Features	: Conductivity Set Value, Alarm Set Value, Valve Relay Test, Alarm Relay Test, Temp. Compensation



PRICE €

### Conductivity Probe Body

Type	: DG 5300
Body	: AISI 304, 316 Stainless Steel
Flange Connection	: DN 15 - DN 50
Probe Connection	: 1/2", 3/4", 1"
Drain Connection	: 1/4"
Nominal Pressure	: PN 10 - PN 63



### Temp. Compensation Type Conductivity Probe

Type	: BD 5300-T
Nominal Pressure	: PN 40
Max. Operat. Temp.	: 239 °C
Max. Operat. Press.	: 32 Bar g
Connection	: 1/2" BSP Threaded
Max. Ambient Temp	: 70 °C



PRICE €

\* Can be produced in desired length.

# VXW

## Vortex Steam Flow Meter

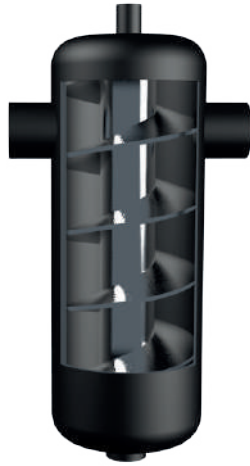
Display	: Total flow and instant flow
Operating Pressure	: 1.6 to 32 Mpa
Ambient Temperature	: - 25 °C to +60 °C
Power	: 24 VDC or 220 VAC
Relative Humidity	: %5 - %95
Atm. Pressure	: 86 - 106 Kpa
Measurable Fluid	: Liquid, Gas, Steam
Accuracy	: %1 (Liquid), 1.5% (Gas and Steam)
Anti Explosion Grade	: Exd Bt4
LCD Digital Display	: L/min, m/h, kg/h, etc.
Output Signal	: 4-20 mA Current (2 Wire System) Standard Pulse Output ( 3 Wire System) Digital Communication Modbus RTU
Medium Temp.	: 0 - 240°C
Reynolds No. Range	: $2 \times 10^4$ - $7 \times 10^6$ (Dn 25 - Dn 100) $4 \times 10^4$ - $7 \times 10^6$ (Dn 150 - Dn 300)

SIZE	PRICE
DN 50	€
DN 65	€
DN 80	€
DN 100	€
DN 125	€
DN 150	€
DN 200	€



\* Please ask for different pressure and temperatures.





**VS**

**Vortex Threaded Carbon Steel**

SIZE	VS-16	VS-25	VS-40
	Dişli	Dişli	Dişli
1/2"	€	€	€
3/4"	€	€	€
1"	€	€	€
1 1/4"	€	€	€
1 1/2"	€	€	€
2"	€	€	€
2 1/2"	€	€	€
3"	€	€	€
3 1/2"	€	€	€
4"	€	€	€
6"	€	€	€
8"	€	€	€
10"	€	€	€
12"	€	€	€



**VSF**

**Vortex Flanged Carbon Steel**

SIZE	VSF-16	VSF -25	VSF-40
	Flanşlı	Flanşlı	Flanşlı
DN 15	€	€	€
DN 20	€	€	€
DN 25	€	€	€
DN 32	€	€	€
DN 40	€	€	€
DN 50	€	€	€
DN 65	€	€	€
DN 80	€	€	€
DN 100	€	€	€
DN 125	€	€	€
DN 150	€	€	€
DN 200	€	€	€
DN 250	€	€	€
DN 300	€	€	€

\* Please ask for stainless steel separators.



SS

### Cyclone Threaded Carbon Steel

SIZE	SS-16	SS-16	SS-16
	Dişli	Dişli	Dişli
1/2"	€	€	€
3/4"	€	€	€
1"	€	€	€
1 1/4"	€	€	€
1 1/2"	€	€	€
2"	€	€	€
2 1/2"	€	€	€
3"	€	€	€
3 1/2"	€	€	€
4"	€	€	€
6"	€	€	€
8"	€	€	€
10"	€	€	€
12"	€	€	€



SSF

### Cyclone Flanged Carbon Steel

SIZE	SSF-16	SSF-16	SSF-16
	Flanşlı	Flanşlı	Flanşlı
DN 15	€	€	€
DN 20	€	€	€
DN 25	€	€	€
DN 32	€	€	€
DN 40	€	€	€
DN 50	€	€	€
DN 65	€	€	€
DN 80	€	€	€
DN 100	€	€	€
DN 125	€	€	€
DN 150	€	€	€
DN 200	€	€	€
DN 250	€	€	€
DN 300	€	€	€

\* Please ask for stainless steel separators.

**ViRA**<sup>®</sup>

[www.viraisi.ir](http://www.viraisi.ir)  
[www.fiammac.com](http://www.fiammac.com)

Tell: +98 913 007 8050  
Mail: [info@fiammac.com](mailto:info@fiammac.com)  
Mail: [vira.fiammac@gmail.com](mailto:vira.fiammac@gmail.com)